

Faces

☐ Symbol extracts human faces from images.

- ["☐/highlights"](#)
- ["☐/highlight"](#)
- [Apes?!](#)
- [TODO](#)

"?/highlights"

"highlights" in plural with an extra ending "s", configures the neural nets in `□□` Symbol to search for and extract all human faces.

Example



```
□□
```

```
show "□□highlights";
```

```
save as faces;
```

Output



In these particular ensemble of neural nets only the faces partially expose are properly processed, however the back of the heads are not!

Example



Output



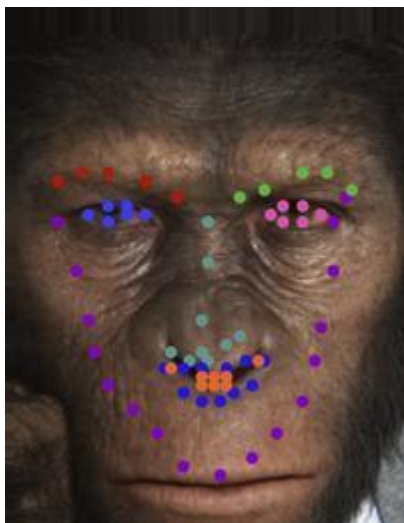
"?/highlight"



```
□□
```

```
show "□□highlight";
```

```
save as highlight;
```



Apes?!

☐☐ symbol in Free Form language accesses images in variety of ways.

No matter, the following orangutan image was accessed by the ☐☐ symbol or **Face Symbol**:



```
☐☐  
  
show "☐☐highlight";  
  
save as face;
```

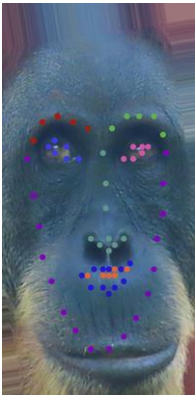
Output

"☐☐/highlights"



"☐☐/highlight"



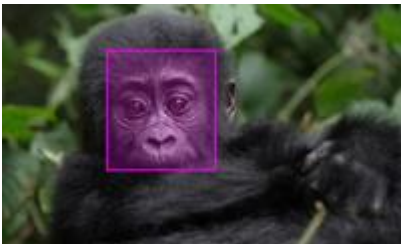


How about this gorilla!



Output

"[]/highlights"



"[]/highlight"





TODO

1. Make Listable